



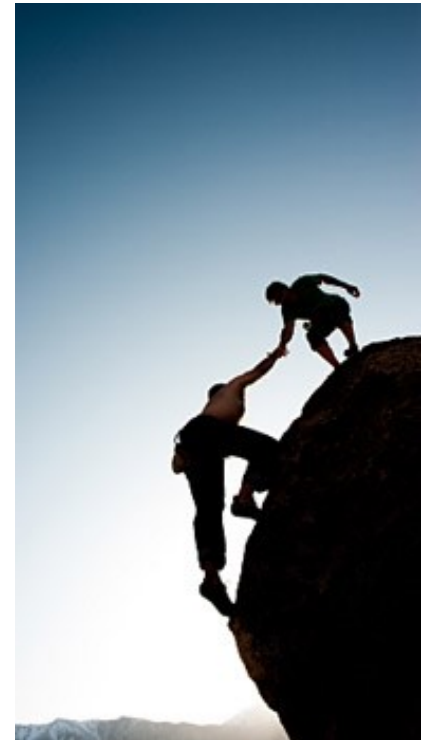
RESCOLL

Leading to competitiveness through
innovation in materials and processes



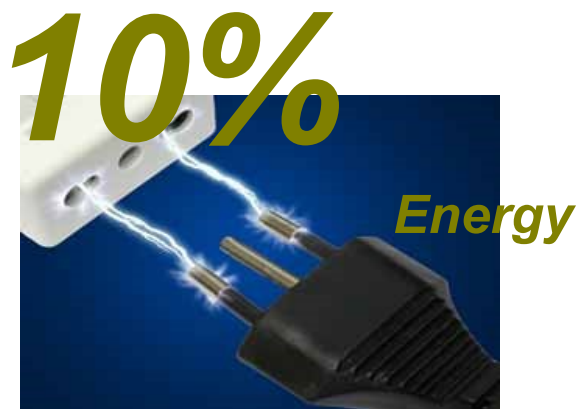
Rescoll is:

A group of service companies performing **R&D and materials analysis & characterisation**, to support the industry with **competitive innovation**





Market Segments



4 projets RAPID en cours



DEMEA

- Leader : RESCOLL
- Partenaires : NEXEYA et TURBOMECA
- Objectif : Mise au point d'un système de dégivrage par micro-ondes d'entrées d'air d'hélicoptères

FOURMI

- Leader : RESCOLL
- Partenaires : MAPAERO « et Dassault et Airbus »
- Objectif : Formulation de revêtements intumescents et/ou décollables et/ou marqueurs thermiques

CLOCHETTE

- Leader : RESCOLL
- Partenaires : MADER et AIRBUS HELICOPTERS
- Objectif : Formulation de revêtements décoratifs extérieurs résistant à très hautes températures

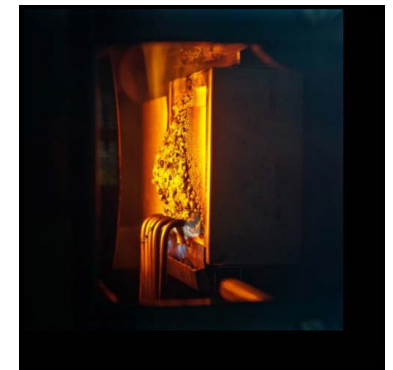
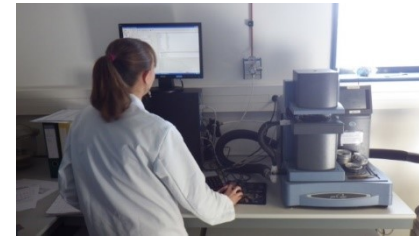
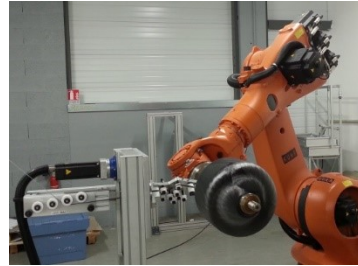
COMFETTI

- Leader : JTT
- Partenaires : RESCOLL et DEPESTELE
- Objectif : Mise au point de composites thermoplastiques ignifugés pour intérieur cabine

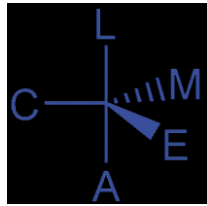
A quoi ressemble notre outil de travail ?



RESCOLL
Société de Recherche



RESCOLL's Group



Maintenance and electronics

Ongoing merger



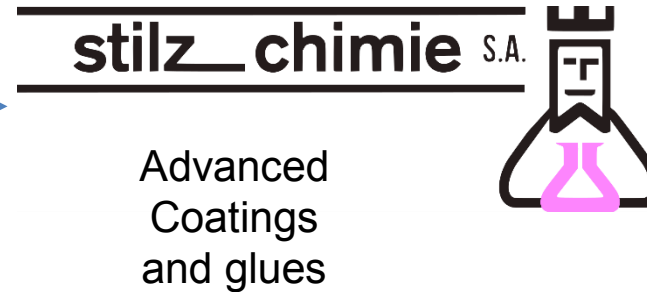
Innovative Surface Treatments
Analysis and characterization



Innovative machined products

Machining services

Novel formulations and precursors



Advanced Coatings and glues

TRL 3

TRL 6

TRL 9

CRITT MATÉRIAUX
FOLIOLE - CHARBON





RESCOLL in figures:

15 M€
Turnover

150

Ing & Techniciens

1,5 M€ of
investment
/year

6 000
m² facilities

>15% annual
growth since 3
years

RESCOLL

Analysis and Characterisation



RESCOLL is Qualified by:



Gulfstream™



RESCOLL is certified:

- ISO 9001 (all activities),
- ISO 17025 (for Analysis and Characterisation)
- ISO 13485
- NADCAP
- ISO 17020 (for Environmental Technology Verification ETV)



BUREAU
VERITAS

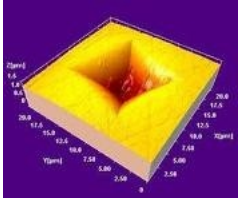
DS/EN ISO 13485:2003



Rescoll's Capacities



Mechanical characterisation of coatings



Mechanical testing



Thermo-mechanical Analysis



Chromatography & TOC



Spectrometry



Components robustness



Vibration

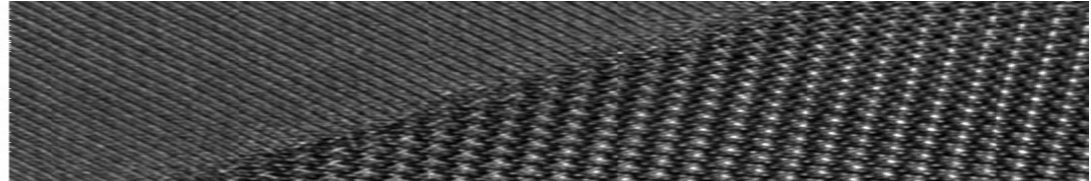


Fire testing

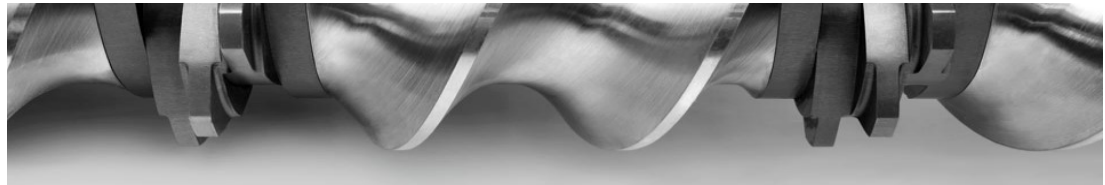


Rescoll's Capacities

Composites prototypes manufacturing



Extrusion



Synthesis lab



Machining



Rescoll's Capacities



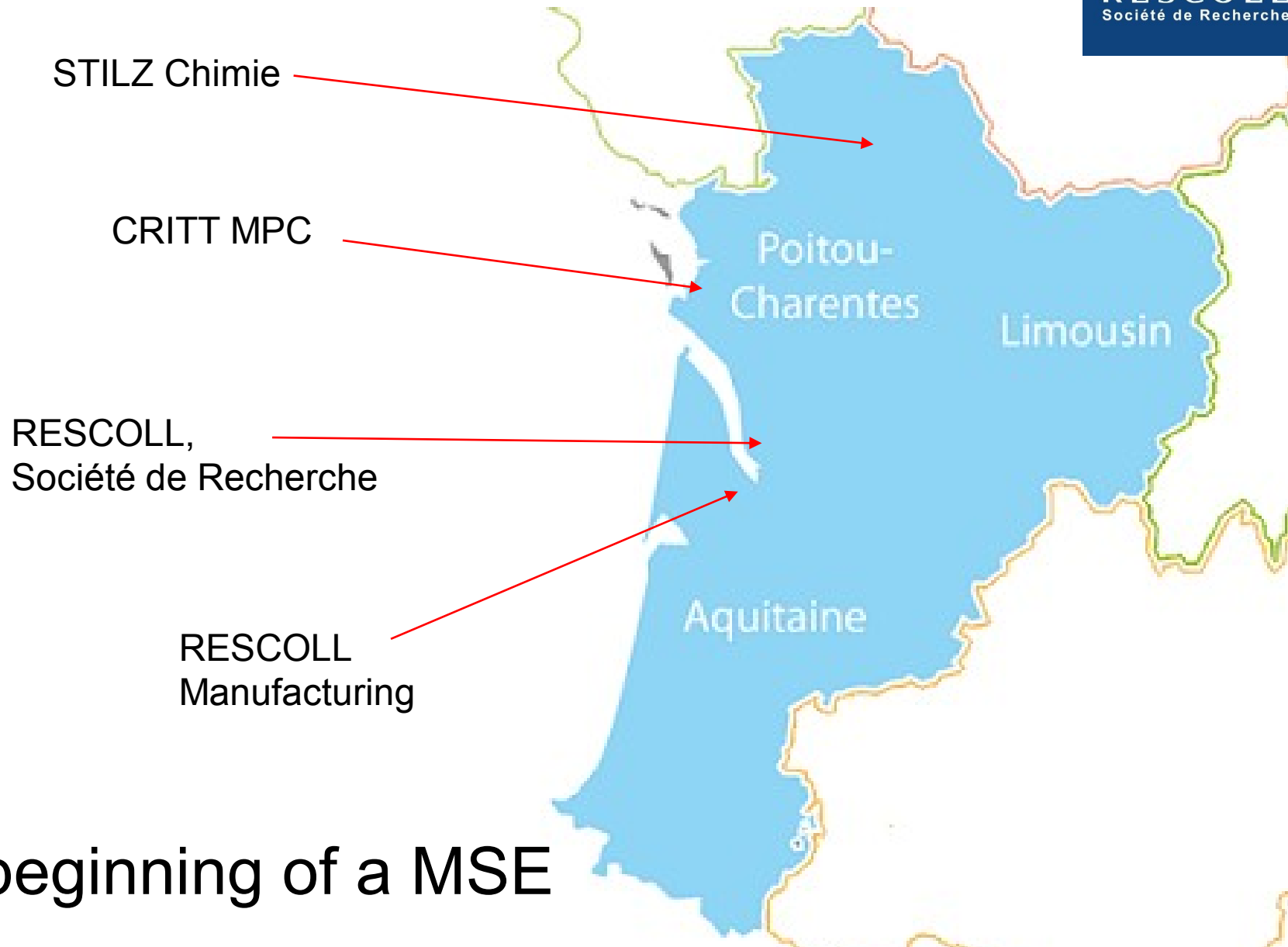
Regulatory issues



LCA, Eco-design, ETV



150 people
15 M€ turnover



The beginning of a MSE

**For further
information:**

RESCOLL
Research Company of Materials

José ALCORTA
e-mail: j.a@rescoll.fr

Tél: +33 628 33 02 57
www.rescoll.fr